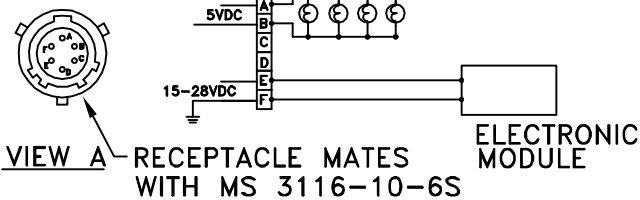
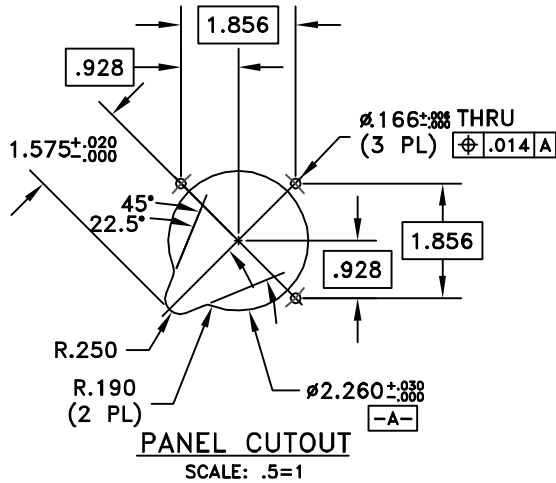
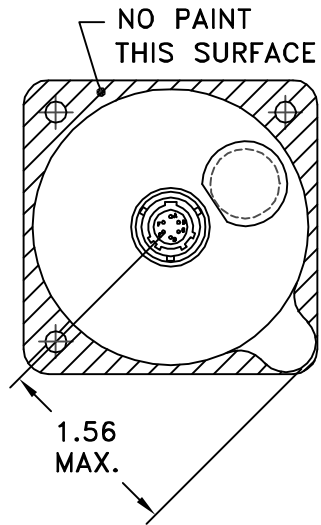
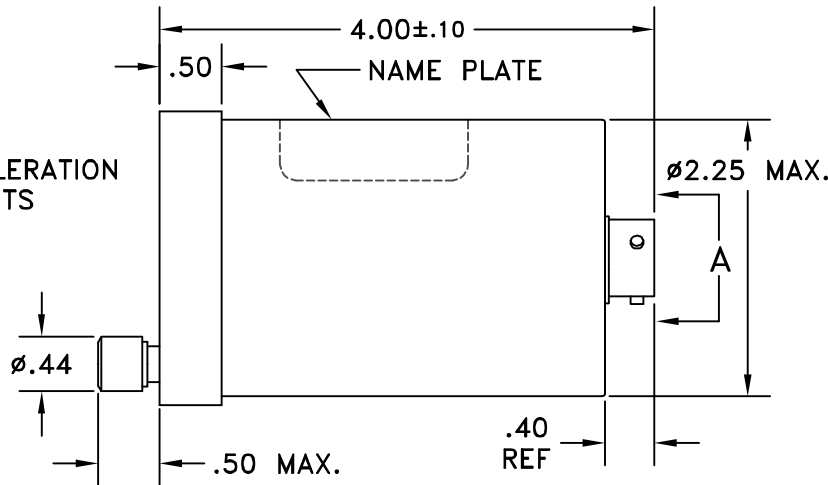
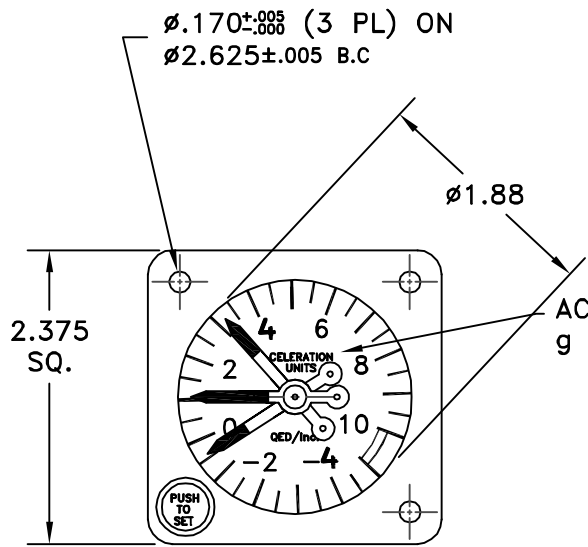


REVISIONS			
LTR	DESCRIPTION	DATE	APPROVED
NC	NEW RELEASE	06/18/09	MP



THIS DOCUMENT IS THE PROPERTY OF QED/INC. AND IS CONVEYED WITH THE EXPRESS CONDITION THAT IT AND THE INFORMATION CONTAINED IN IT ARE NOT TO BE USED, DISCLOSED, OR REPRODUCED IN WHOLE OR IN PART, FOR ANY PURPOSE WITHOUT THE EXPRESS WRITTEN CONSENT OF QED/INC., AND THAT NO RIGHT IS GRANTED TO DISCLOSE OR SO USE ANY INFORMATION CONTAINED IN SAID DOCUMENT. THIS DOCUMENT MAY CONTAIN INFORMATION SUBJECT TO THE ITAR OR THE EAR. THIS INFORMATION MAY NOT BE EXPORTED, RELEASED, OR DISCLOSED TO FOREIGN NATIONALS OR NON-U.S. PERSONS WITHOUT FIRST COMPLYING WITH THE EXPORT REQUIREMENTS OF THE ITAR AND EAR.

3. PAINT BLACK PER FED. STD. 595, COLOR #37038, EXCEPT ON SURFACE INDICATED.
 2. LIGHTING: MIL-A-85762A "NVIS GREEN A"
 1. REF. SPEC. MIL-A-27261 ACCELEROMETER, AIRCRAFT, ABU-8A/A
- NOTES

NEXT ASSY	USED ON
APPLICATION	

ITEM	QTY	DESCRIPTION	IDENT	PART NUMBER	REMARKS
LIST OF MATERIALS					
UNLESS OTHERWISE SPECIFIED DIMENSIONS ARE IN INCHES DECIMALS FRACTIONS .X ± .XX ±.030 ANGLES .XXX±.010 ±		SIGNATURES BY AFS CKD ENGR LMP APPD	DATE 06/11/09 06/11/09	QED/INC. 2920 SOUTH HALLADAY STREET SANTA ANA, CALIFORNIA 92705 ACCELEROMETER ELECTRONIC/ANALOG	
MATL:		FINISH		SIZE B	CODE IDENT NO. 24708
				DWG NO. 3010-40-500	
		SCALE 1:1	WT.	SHEET 1 OF 2	

