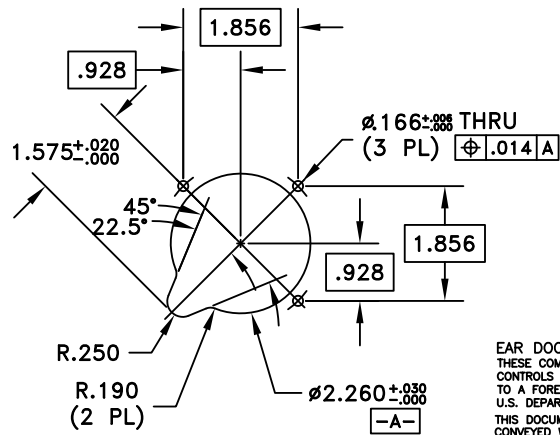
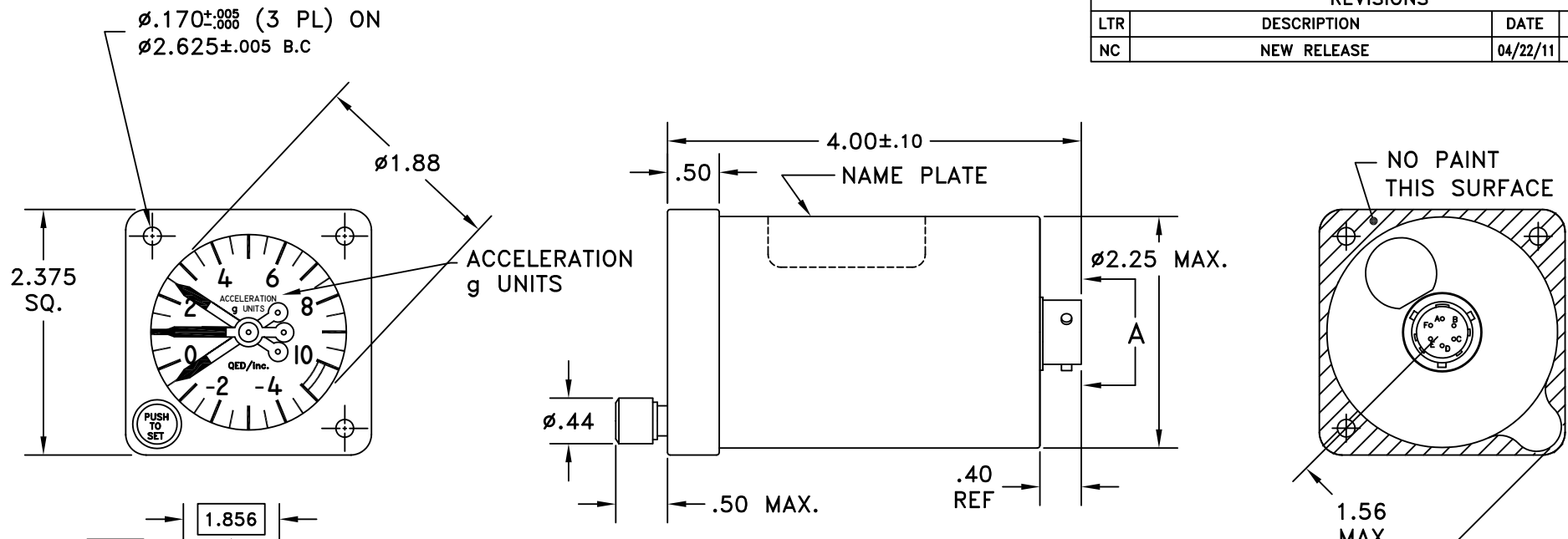
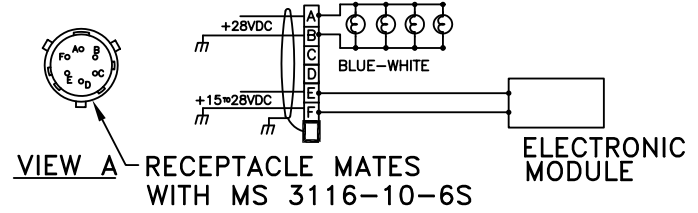


REVISIONS			
LTR	DESCRIPTION	DATE	APPROVED
NC	NEW RELEASE	04/22/11	RK



PANEL CUTOUT
SCALE: .5=1



EAR DOCUMENT
 THESE COMMERCIAL ITEMS ARE SUBJECT TO THE EXPORT CONTROLS OF THE U.S. GOVERNMENT, AND MAY NOT BE EXPORTED TO A FOREIGN PERSON WITHOUT THE WRITTEN APPROVAL OF THE U.S. DEPARTMENT OF COMMERCE.
 THIS DOCUMENT IS THE PROPERTY OF QED/INC. AND IS CONVEYED WITH THE EXPRESS CONDITION THAT IT AND THE INFORMATION CONTAINED IN IT ARE NOT TO BE USED, DISCLOSED, OR REPRODUCED IN WHOLE OR IN PART, FOR ANY PURPOSE WITHOUT THE EXPRESS WRITTEN CONSENT OF QED/INC., AND THAT NO RIGHT IS GRANTED TO DISCLOSE OR SO USE ANY INFORMATION CONTAINED IN SAID DOCUMENT.

2. LIGHTING PER MIL-C-25050
 1. PAINT DURABLE DULL BLACK REF. COLOR #37038 OF FED-STD-595, EXCEPT ON SURFACE INDICATED.
NOTES

UNLESS OTHERWISE SPECIFIED DIMENSIONS ARE IN INCHES DECIMALS FRACTIONS X ± .XX ± .030 ANGLES .XXX ± .010 ±	SIGNATURES	DATE	QED/inc. 2920 SOUTH HALLADAY STREET SANTA ANA, CALIFORNIA 92705	
	BY RK	04/22/11	TITLE	ACCELEROMETER ELECTRONIC/ANALOG
MATL:	ENGR R. KAGAWA	04/22/11	SIZE	CODE IDENT NO. 24708 DWG NO. 3010-45-500
FINISH	APPD		SCALE	1:1 WT. SHEET 1 OF 2

REVISIONS			
LTR	DESCRIPTION	DATE	APPROVED

SPECIFICATIONS

1. RANGE: -5g TO +10g
2. THE SCALE ERROR FOR EACH READING IS NOT TO EXCEED $\pm 0.2g$ AT 20°C
3. LIGHTING: 28.0 VDC MAX., .020 AMPS NOMINAL PER BULB
4. INSTRUMENTATION: 15.0 TO 28.0 VDC, .12 AMPS MAX.

MATERIALS

1. COVER GLASS: SHALL BE COATED WITH A REFLECTION REDUCING FILM IN ACCORDANCE WITH MIL-C-14806
2. DIAL TEXT SHALL BE FLAT WHITE: SIMILAR TO FED-STD-595 COLOR #37875, BACKGROUND SHALL BE BLACK; SIMILAR TO FED-STD-595 COLOR #37038
3. MAIN POINTER: INDICATES REAL TIME ACCELERATION.
4. TWO AUXILIARY POINTERS ("TELL TALES"): ONE INDICATES MAX. POSITIVE ACCELERATION THE OTHER INDICATES MAX. NEGATIVE ACCELERATION BOTH PROVIDED WITH RATCHET LOCKING DEVICES ALLOWING MAX. INDICATIONS TO BE MAINTAINED UNTIL THE RESET KNOB IS DEPRESSED TO RESET THE AUXILIARY POINTERS

DESIGN CRITERIA

1. TEMPERATURE: -30°C TO +70°C
2. WEIGHT: 0.9 LBS MAX. (408 GRAMS)
3. TEST CONDITIONS- ALL VISUAL TESTS SHALL BE RESTRICTED TO THE UNAIDED EYE WITHIN A 60° CONE OF VISIBILITY AT A DISTANCE OF 18.0 \pm 2.0 INCHES, PER MIL-G-81704 PARA. 4.3.1.

DESIGN CRITERIA PER RTCA DO 160

DESCRIPTION	SECTION	CATEGORY
TEMPERATURE	4	A2
ALTITUDE	4	A2
TEMPERATURE VARIATION	5	C
OPERATIONAL SHOCKS	7	A
VIBRATION	8	R ZONE 2
MAGNETIC EFFECTS	15	Z
POWER INPUT	16	Z
VOLTAGE SPIKES	17	A
AUDIO FREQUENCY CONDUCTED SUSCEPTIBILITY	18	B
INDUCED SIGNAL SUSCEPTIBILITY	19	Z
RF SUSCEPTIBILITY	20	T
RF CONDUCTED EMISSIONS	21	M
RF RADIATED EMISSIONS	21	H
LIGHTNING INDUCED TRANSIENT SUSCEPTIBILITY	22	AZZZ
ELECTROSTATIC DISCHARGE	25	A

UNLESS OTHERWISE SPECIFIED DIMENSIONS ARE IN INCHES DECIMALS FRACTIONS X ± .030 ± .XXX ± .010 ±	SIGNATURES		DATE	QED/inc. 2920 SOUTH HALLADAY STREET SANTA ANA, CALIFORNIA 92705
	BY	RK	04/22/11	
MATL:	CKD			TITLE ACCELEROMETER ELECTRONIC/ANALOG
	ENGR	R. KAGAWA	04/22/11	
FINISH	APPD			SIZE
				B
				CODE IDENT NO.
				24708
				DWG NO.
				3010-45-500
				SCALE
				1:1
				WT.
				SHEET
				2 OF 2